

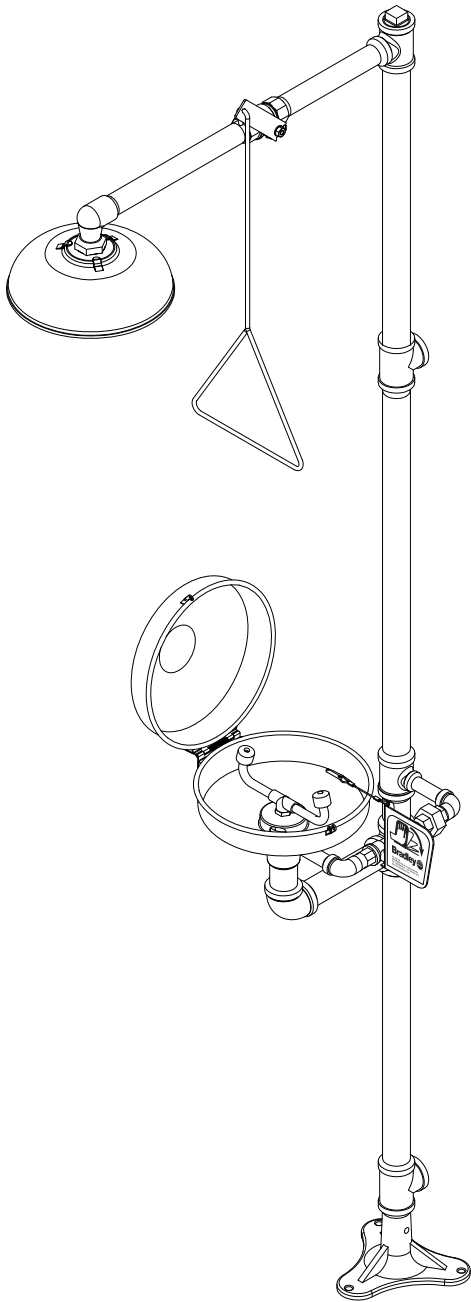
Installation

E19-310DC

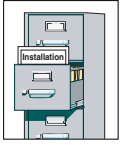
Combination Drench Shower/Eyewash

Table of Contents

Pre-Installation Information	2
Installation Instructions	3
Assembly of Components	4
Parts List	5



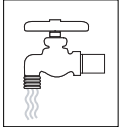
⚠ WARNING ⚠



Read this installation manual completely to ensure proper installation, then file it with the owner or maintenance department. Compliance and conformity to drain requirements and other local codes and ordinances is the responsibility of the installer.



Separate parts from packaging and make sure all parts are accounted for before discarding any packaging material. If any parts are missing, do not begin installation until you obtain the missing parts.



Flush the water supply lines before beginning installation and after installation is complete. Test the unit for leaks and adequate water flow. Main water supply to the eyewash should be "ON" at all times. Provisions shall be made to prevent unauthorized shutoff.



The ANSI Z358.1 standard requires an uninterrupted supply of flushing fluid at a minimum 30 PSI (0.21 MPa) flowing pressure. Flushing fluid should be tepid per ANSI Z358.1.



The inspection and testing results of this equipment should be recorded weekly to verify proper operation. This equipment should be inspected annually to ensure compliance with ANSI Z358.1.



Workers who may come in contact with potentially hazardous materials should be trained regarding the placement and proper operation of emergency equipment per ANSI Z358.1.



For questions regarding the operation or installation of this product, visit www.bradleycorp.com or call 1-800-BRADLEY.

Product warranties may also be found under "Product Information" on our web site at www.bradleycorp.com.

Installation

Supplies Required:

- (3) M10 floor anchors and bolts
- Teflon tape and pipe sealant
- Piping to 1-1/4" BSP water supply inlet on unit
- Adequate supply pipe supports
- Piping to 1-1/4" BSP drain outlet for eyewash
- Minimum 102mm (4") drain to accommodate 115 liters (30 gallons) per minute discharge for shower waste
- OPTIONAL: sign-mounting hardware

Step 1: Secure base to floor

1. Install three suitable anchors (by installer) for M10 bolts in the floor (see Figure 1).
2. Bolt the base to the floor anchors using M10 bolts (supplied by installer).



IMPORTANT: Some teflon sealants may cause stress cracks in the plastic showerhead leading to failure. Use teflon tape for sealing the showerhead.

Step 2: Assemble eyewash components

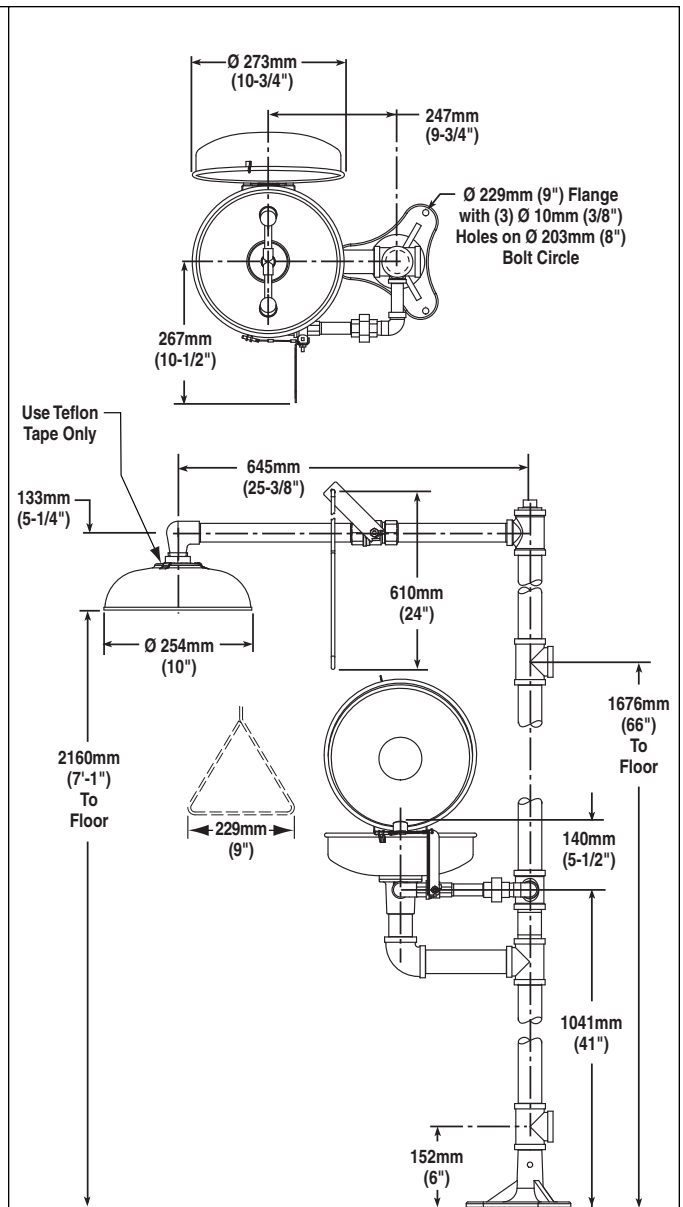
1. Assemble the remaining unit components as shown in Figure 2 on page 4.
 - Apply pipe sealant (supplied by installer) to all male-threaded pipe joints.
 - Use the rubber grip pad provided or a strap wrench around pipes when tightening to prevent marring. Place the grip pad on the pipe, then put the wrench over the grip pad and turn the pipe with the wrench.
 - Bottom edge of showerhead should be 2160mm (7'-1") from floor.

Step 3: Connect water supply



IMPORTANT: Do not rely on Bradley's Combination Unit to support supply piping.

1. Connect water supply piping to 1-1/4" BSP inlet on unit (piping supplied by installer). Provide adequate supports (supplied by installer) for supply pipe using pipe hangers or other means.
2. Connect drain piping to 1-1/4" BSP drain outlet on unit (piping supplied by installer).
3. Hang the safety sign from the unit with the curtain hooks provided (or mount it to the wall using sign-mounting hardware supplied by installer).



NOTE: All dimensions assume standard thread engagement. Variations in manufacturing allow for +/- 1/8" (3mm) per threaded joint. To find the tolerance of a dimension, add the number of thread joints in between a dimension and multiply it by 1/8" (3mm).

Figure 1

Assembly of Components

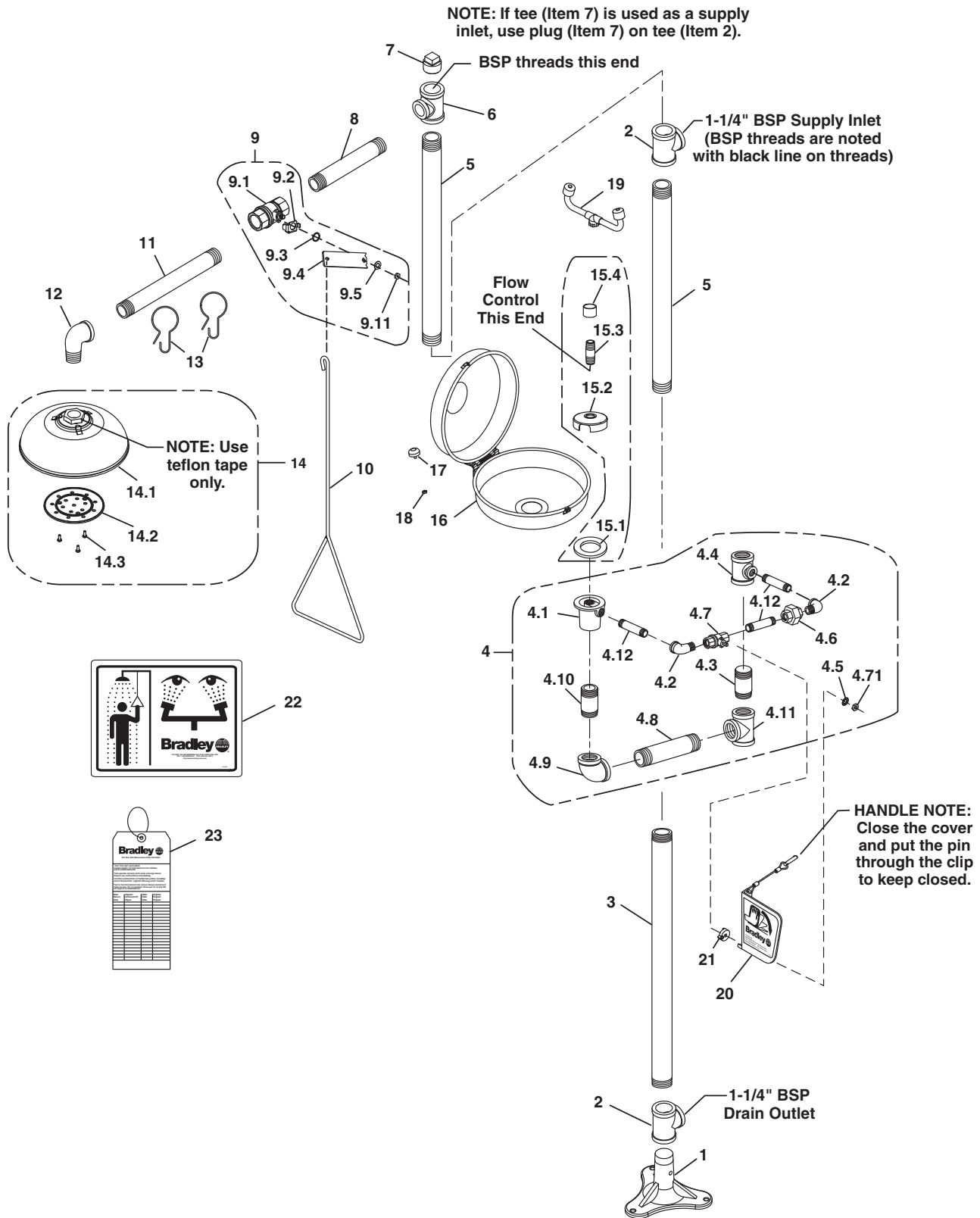


Figure 2

NOTE: Items 4.1–4.12 come preassembled as Item 4.
 Items 9.1–9.5 come preassembled as Item 9.
 Items 14.1–14.3 come preassembled as Item 14.

Parts List

Item	Part No.	Qty	Description	Item	Part No.	Qty	Description
1	131-059	1	Base	9.3	124-048	1	Washer, Friction
2	169-727B	2	Pipe Tee 1-1/4" NPT	9.4	128-129	1	Handle
3	113-006LC	1	Pipe 1-1/4" NPT x 706 mm	9.5	142-002DC	1	Lockwasher
4	S39-226	1	Europe Eyewash Sub-Assy.	10	128-156A	1	Pull Rod - 24" Long
4.1	111-039	1	Inlet Drain Fitting	11	113-006LK	1	Pipe 1" NPT x 310 mm
4.2	169-025	2	Street Elbow	12	169-723	1	90° Street Elbow 1" NPT
4.3	S06-136	1	Plgd. Nipple 1-1/4" NPT x 76mm	13	151-001	2	Curtain Hook
4.4	169-841	1	Reducing Tee	14	S24-070	1	Showerhead Assembly
4.5	142-002DA	1	Lockwasher	14.1	154-057	1	Showerhead Shell
4.6	169-726	1	Union 1/2" Female NPT	14.2	155-005	1	Diffuser
4.7	S27-282	1	1/2" Ball Valve with Nut	14.3	160-245	3	Screw
4.7.1	110-215	1	Jam Nut only	15	S45-1782	1	Cup Strainer Prepack
4.8	113-006QX	1	Pipe 1-1/4" NPT x 180mm	15.1	124-028	1	Center Seal Gasket
4.9	169-764	1	90° Pipe Elbow 1-1/4" NPT	15.2	173-009	1	Cup Strainer
4.10	113-006LE	1	Pipe Nipple 1-1/4" NPT x 76mm	15.3	S21-071	1	Stem Pipe Assembly
4.11	169-727	1	Pipe Tee 1-1/4" NPT	15.4	113-1159	1	Spacer, Drain
4.12	113-006LQ	3	Pipe 1/2" NPT x 76mm	16	S90-009	1	Dust Cover Assembly
5	113-006LW	2	Pipe 1-1/4" NPT x 579 mm	17	269-447	1	Bumper
6	169-722B	1	Reducing Tee	18	161-025	1	Nut
7	169-724	1	Pipe Plug 1-1/4" NPT	19	S05-091	1	Eyewash Yoke
8	113-006LL	1	Pipe 1" NPT x 234 mm	20	S08-056	1	Handle Assembly
9	S30-059	1	Stay-Open Ball Valve 1" NPT	21	153-372R	1	Adapter
9.1	S27-278	1	1" Ball Valve with Jam Nut	22	204-421	1	Emergency Tag
9.1.1	110-214	1	Jam Nut only	23	114-052E	1	Safety Sign
9.2	140-720	1	Stop Bracket	24	269-915	1	Grip Pad (not shown)

Prepack S30-087 includes Items 4.7.1, 4.5, 20